

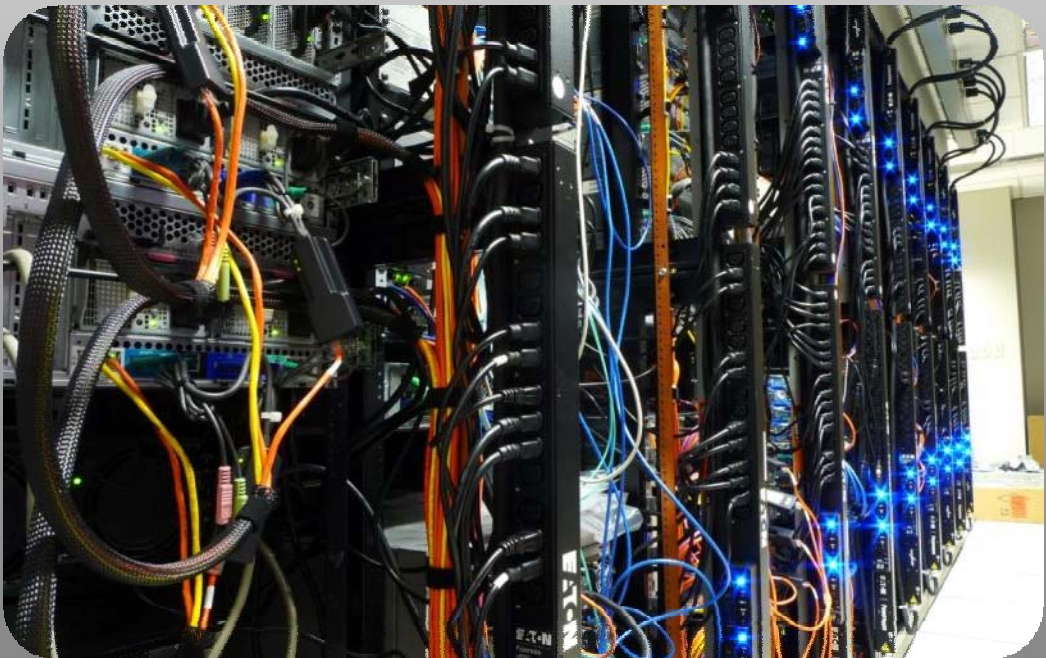


Telecoms Infrastructure  
Specialists

## *2012 Remote Hands Service Brochure*



## Equipment Installation and Configuration



## Copper and Fibre Cabling

[WWW.GEMCABLE.COM](http://WWW.GEMCABLE.COM)



# Your On-Site Presence, All Across The UK



## Our service includes;

- Local purchase of equipment if required
- We receive your deliveries at our facility, and transport to site only when required for installation.
- UK power cords can be supplied if equipment is not shipped with them.
- All serial numbers recorded, and equipment tested before installation to ensure no DOAs
- All packaging is removed from site; recovery CDs are left with the equipment if required, any other paperwork/manuals can be forwarded to the client as needed
- Cabinet and Containment Installation if required
- Cat.5e/Cat.6 and fibre inter-cabinet links installed
- Base configuration applied to allow your technicians to access your equipment remotely and complete the configuration
- Documentation of completed install

Gem Cable has been working in some of the most prestigious UK datacentres since 1995. In that time, our service portfolio has expanded to include all aspects of Telecoms Infrastructure provision.

Our Remote Hands service gives our clients complete control over the installation of their infrastructure and equipment in their chosen Colocation facility.

Contact us on  
+44 (0)844 921 0190 or [enquiries@gemcable.com](mailto:enquiries@gemcable.com)  
to discuss your requirements or to arrange a free,  
no obligation quotation.  
(quotations take between 2 days to a week after the  
confirmation of the requirements, depending on the size of the  
project)

GEM Cable complies to the provision of Quality Products and Services by  
operating and Maintaining a Quality Management System in compliance with  
the requirements of ISO9001:2008



[WWW.GEMCABLE.COM](http://WWW.GEMCABLE.COM)



# Copper Cabling

Our Copper Cabling service includes Category 5e, Category 6 and Category 6A installation, termination and testing.

By installing panels between cabinets, we can eliminate the need to install patch cords between racks.

A full 25 year warranty can be offered on Category 5e, 6 or 6A installations in conjunction with our manufacturing partners.



GEM Cable complies to the provision of Quality Products and Services by operating and Maintaining a Quality Management System in compliance with the requirements of ISO9001:2008



[WWW.GEMCABLE.COM](http://WWW.GEMCABLE.COM)



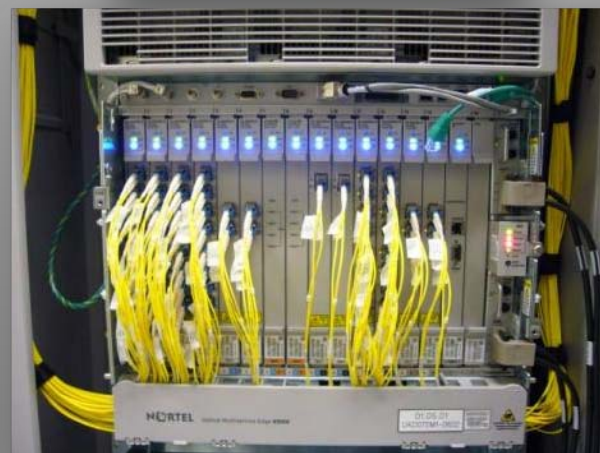
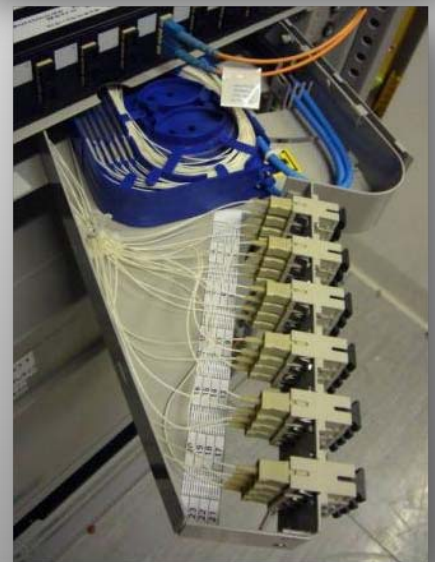


# Fibre Cabling

Our Fibre Cabling services include singlemode\* and multimode\* installation, termination and testing. We can provide panel to panel links, fibre cross-connects, bulk patching and containment.

By installing fibre patch panels in each rack, fibre connections can be quickly made and changed, without needing to run fibre patchcords between cabinets.

All our fibre terminations are made on-site by fusion splicing pre-terminated and polished pigtails to the fibre cores (from 4 cores to 144). This allows us to provide a fast and efficient service on site.



\*Multimode 62.5/125 (OM1) Datacomms

\*Multimode 50/125 (OM2) Video & Datacomms Systems

\*Multimode 50/125 (OM3) Gigabit Ethernet and 10 Gig Ethernet for up to 300m

\*Singlemode 9/125 (OS1) Gigabit Ethernet and 10 Gig Ethernet for up to 2km.

GEM Cable complies to the provision of Quality Products and Services by operating and Maintaining a Quality Management System in compliance with the requirements of ISO9001:2008





## Equipment Installation

We un-pack, install, label and patch your equipment to your exact requirements, then apply a base configuration to your specification, allowing your technicians to remotely connect and complete the configuration.

By using our engineers across multiple sites, a consistent and high standard of installation is achieved every time.

Equipment can be delivered to and stored at our premises, easing the staging of installations. Equipment will be assembled if required, and powered up, with any software or firmware upgrades being applied in advance. We also ensure that all power cords are compatible with the presentation in the destination cabinet.

All waste is removed and disposed of off-site



GEM Cable complies to the provision of Quality Products and Services by operating and Maintaining a Quality Management System in compliance with the requirements of ISO9001:2008



[WWW.GEMCABLE.COM](http://WWW.GEMCABLE.COM)



# Upgrades

Our engineers are experienced in working on live equipment, and can carry out upgrades to hot-swappable modules, taking all precautions to avoid unwanted interruptions to services.

As with equipment installation, modules can be delivered to our premises for distribution to the planned locations.

Patching of new services can be carried out, with new cabling being installed as required.

Containment upgrades to existing infrastructure are carried out with the greatest of care to ensure that existing services using the original containment are protected for the duration (e.g. 6" to 12" Fibreguide® upgrades).



GEM Cable complies to the provision of Quality Products and Services by operating and Maintaining a Quality Management System in compliance with the requirements of ISO9001:2008







# Cabinets and Containment

We supply and fit containment of all types, from skirting trunking to overhead Fibreguide<sup>®</sup>, basket tray and steel kopex. Firestopping is applied / re-instated in kind where required.

Our skilled engineers can install cabinets and frames from all manufacturers, (constructing under-floor supports where necessary).

Under-floor / overhead cable tray or basket installations of all sizes, from simple runs to complete data hall fit-outs

Cabinets and frames of all sizes supplied and/or fitted, from 10U wall-mount cabinets to 47U high density patching frames and everything in between



GEM Cable complies to the provision of Quality Products and Services by operating and Maintaining a Quality Management System in compliance with the requirements of ISO9001:2008



[WWW.GEMCABLE.COM](http://WWW.GEMCABLE.COM)



# Project Management

We can manage your installation from start to finish, releasing you from the day to day supervision of not only our engineers, but also other engineering teams.

By managing the project from start to finish, we can offer a complete turnkey service.

As well as Project Management, we can carry out site surveys on your behalf, providing all the detail you require to plan an installation.

Our Project Managers can also act as access managers, liaising with building management and IT staff on-site to ensure delays are minimised.



GEM Cable complies to the provision of Quality Products and Services by operating and Maintaining a Quality Management System in compliance with the requirements of ISO9001:2008



[WWW.GEMCABLE.COM](http://WWW.GEMCABLE.COM)





# Hardware Supply

We can supply all your network infrastructure hardware requirements, from copper and fibre patch cords to equipment racks.

Custom metal-work assemblies can be designed and manufactured to your specific requirements (e.g. special panel mounting brackets, vented cabinet doors etc).



GEM Cable complies to the provision of Quality Products and Services by operating and Maintaining a Quality Management System in compliance with the requirements of ISO9001:2008





## Engineers And Tooling

Our fleet of liveried vans are all fully equipped to carry out any equipment or network installation.

Power tools have recently been upgraded across the fleet to Hilti products to improve speed of installation and reliability.

Fibre termination is carried out using Sumitomo fusion splicers.



GEM Cable complies to the provision of Quality Products and Services by operating and Maintaining a Quality Management System in compliance with the requirements of ISO9001:2008



[WWW.GEMCABLE.COM](http://WWW.GEMCABLE.COM)



# Geographical Coverage

Gem Cable can cover the whole of the UK and Northern Ireland, though 90% of our customers are based in Central London, we can provide coverage right across the UK if required.



GEM Cable complies to the provision of Quality Products and Services by operating and Maintaining a Quality Management System in compliance with the requirements of ISO9001:2008



[WWW.GEMCABLE.COM](http://WWW.GEMCABLE.COM)





## Contact Details

Contact us on  
+44 (0)844 921 0190 or [enquiries@gemcable.com](mailto:enquiries@gemcable.com) to discuss  
your requirements or to arrange a free, no obligation  
quotation.

Gem Cable  
Unit C, Oakleaf Court,  
Ryehill Close,  
Lodge Farm,  
Northamptonshire  
NN5 7UA  
Tel +44 (0)844 921 0190  
Fax +44(0)844 921 0195

(quotations take between 2 days to a week after the confirmation of the requirements, depending on the  
size of the project)